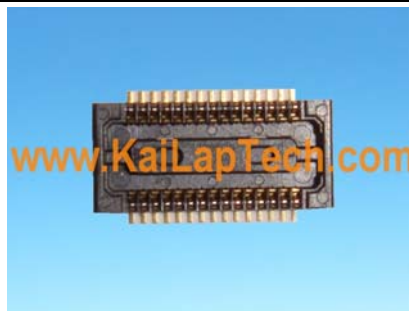


**KLT-N8K-S5K3H7 V2.1****Samsung S5K3H7 MIPI Schnittstelle Autofokus 8MP Kameramodul**

<b>Kameramodul Nr.</b>	<b>KLT-N8K-S5K3H7 V2.1</b>
<b>Bildsensor</b>	S5K3H7
<b>EFL</b>	3.85 mm
<b>F.NO</b>	2.2
<b>Pixel</b>	3264 x 2448
<b>Blickwinkel</b>	72.9°
<b>Linsentyp</b>	1/3.2 Zoll
<b>Objektivabmessungen</b>	8.5 x 8.5 x 5.17 mm
<b>Modulgröße</b>	37.40 x 21.25 mm
<b>Modultyp</b>	Autofokus
<b>Schnittstelle</b>	MIPI

**Gegenstecker Teile-Nr. DF30FC-30DS-0.4V**

Gegenstecker auf der Hauptplatine. Separat erhältlich.

A photograph of three young children climbing a rope net on a playground. The child in the center is wearing a blue polo shirt and has a wide, joyful expression with their mouth open. The child to the right is wearing a striped shirt and is also smiling. The background is a blurred wooden deck, suggesting motion. A large, semi-transparent watermark 'CameraModuleFactory.com' is overlaid diagonally across the image.

Top-class sensor for  
premium mobile application!

## Samsung S5K3H7

High speed and low power 8Mpixel sensor

8Mp 1/3.2" 1.4um BSI Pixel Image Sensor provides;

- Video features of 30fps at full 8Mp for zero shutter lag
- Low power camera solution with optimal design
- Outstanding BSI pixel providing clear and sharp still images in low light, YSNR10 82 Lux

**SAMSUNG**

# Samsung S5K3H7

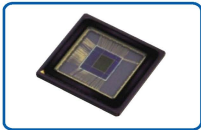
8Megapixel 1/3.2" 1.4um BSI CMOS Image Sensor

## Key Features & Benefits



### Target Applications

- Feature phones, Smart phones, Tablet and Digital Still Camera



### Key Features

- Low power solution at full 8Mp
- Improved BSI pixel for clear and sharp still image
- On-chip Bad Pixel Correction (BPC)

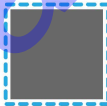
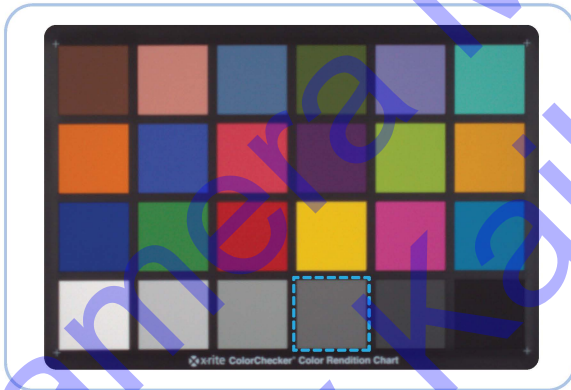


### High Speed Frame Rate

- Full 8Mp 30fps enabling crisp still photos
- Video recording: full HD 30fps, HD 120fps, QVGA 240fps

## Product Images

700 Lux



Analog gain x1.6, 30fps  
Shutter speed 55.5ms  
SNR:38.7dB

50 Lux



Analog Gain x16, 30fps  
Shutter Speed 33ms  
SNR:25.69dB

## Availability

S5K3H7 is sampling now with volume production for Q1, 2012.

Samsung Electronics Semiconductor Business

San#24 Nongseo-Dong, Kiheung-Gu, Youngin-City, Kyunggi-Do, Korea

For more information, please visit [www.samsungsemi.com](http://www.samsungsemi.com)

The appearance of all products, dates, figures, diagrams and tables are subject to change at anytime without notice

SAMSUNG